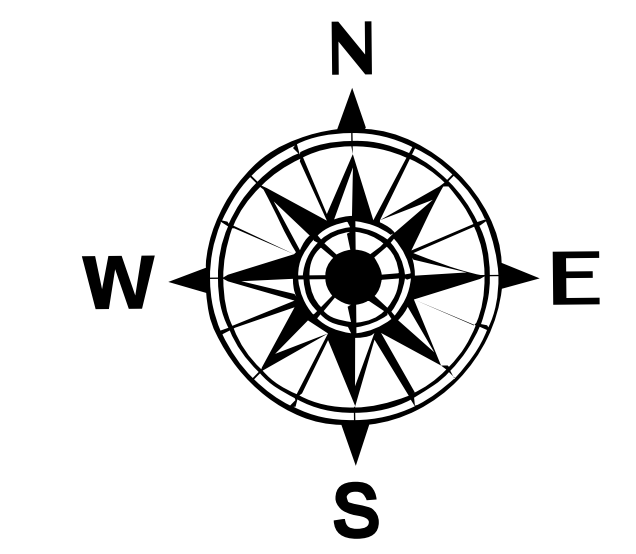
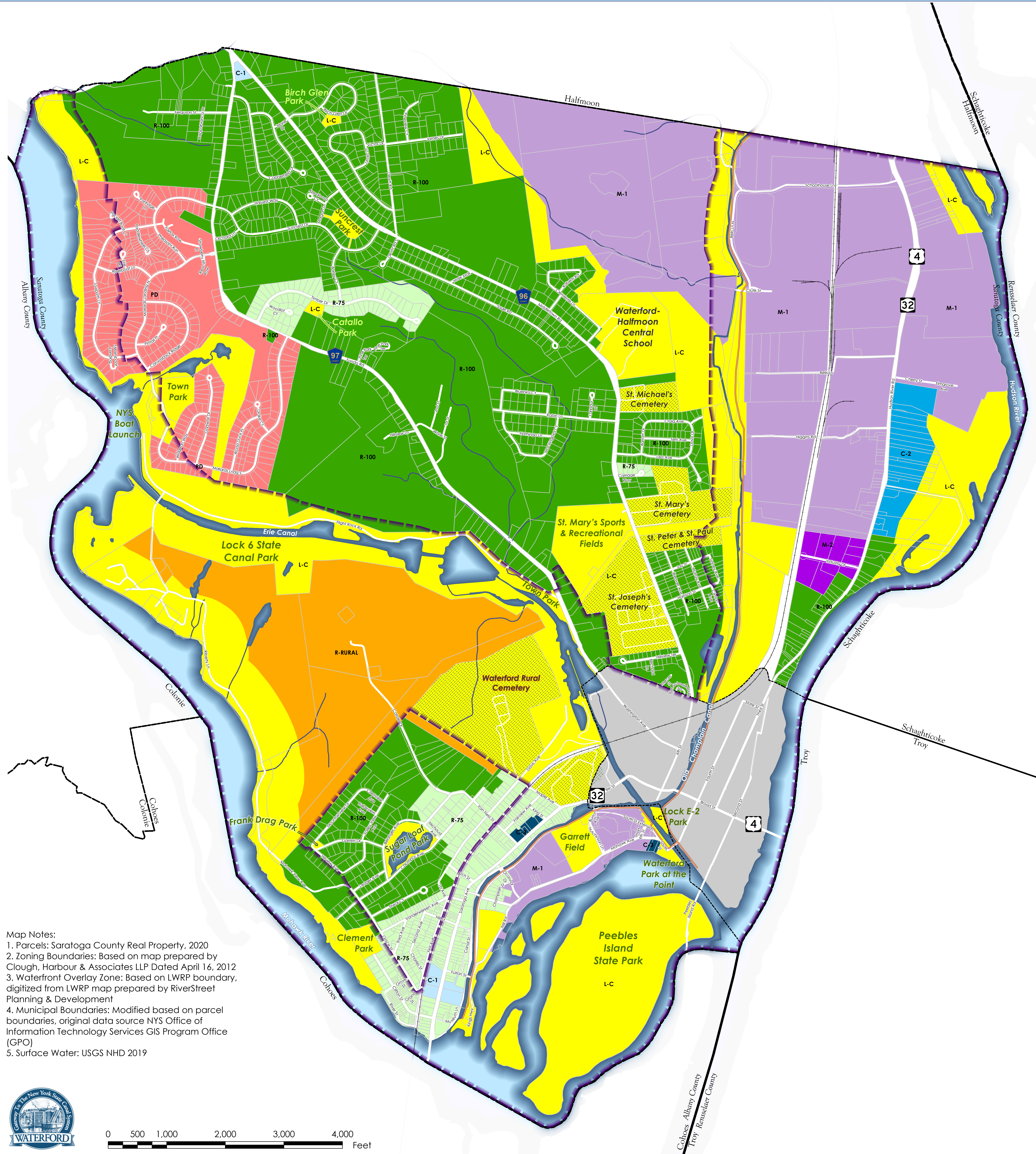


# Town of Waterford Zoning Map



Saratoga County - State of New York



### Zoning Districts

- R-75 Residence District
- R-100 Residence District
- R-RURAL Residential District
- C-1 Commercial District
- C-2 Commercial District
- C-3 Commercial District
- M-1 Manufacturing District
- M-2 Industrial District
- L-C Land Conservation District
- PD Planned District
- Waterfront Overlay Zone
- Village of Waterford
- Cemeteries
- Parcels
- Surface Water
- ~ Champlain Canalway Trail
- ~ Rail Lines

Map Last Revised: June 19, 2020

**Map Notes:**  
 1. Parcels: Saratoga County Real Property, 2020  
 2. Zoning Boundaries: Based on map prepared by Clough, Harbour & Associates LLP Dated April 16, 2012  
 3. Waterfront Overlay Zone: Based on LWRP boundary, digitized from LWRP map prepared by RiverStreet Planning & Development  
 4. Municipal Boundaries: Modified based on parcel boundaries, original data source NYS Office of Information Technology Services GIS Program Office (GPO)  
 5. Surface Water: USGS NHD 2019

