

# Mohawk Gateway Streetscape Project

Improving the Southern  
Gateway

Town of Waterford



Department  
of State

*This presentation was prepared with funding provided by the New York State Department of State under Title 11 of the Environmental Protection Fund.*

The background features several sets of concentric, curved lines in light gray and white, some solid and some dashed, creating a sense of motion and depth. A blue speech bubble shape is positioned on the left side of the slide.

## Purpose of Today's Meeting

- **Introduce the Mohawk Gateway Streetscape Project**
- **Understand Existing Conditions**
- **Present Streetscape Design Ideas**
- **Feedback/Comments**
- **Plan for Next Steps**



## Local Waterfront Revitalization Plan

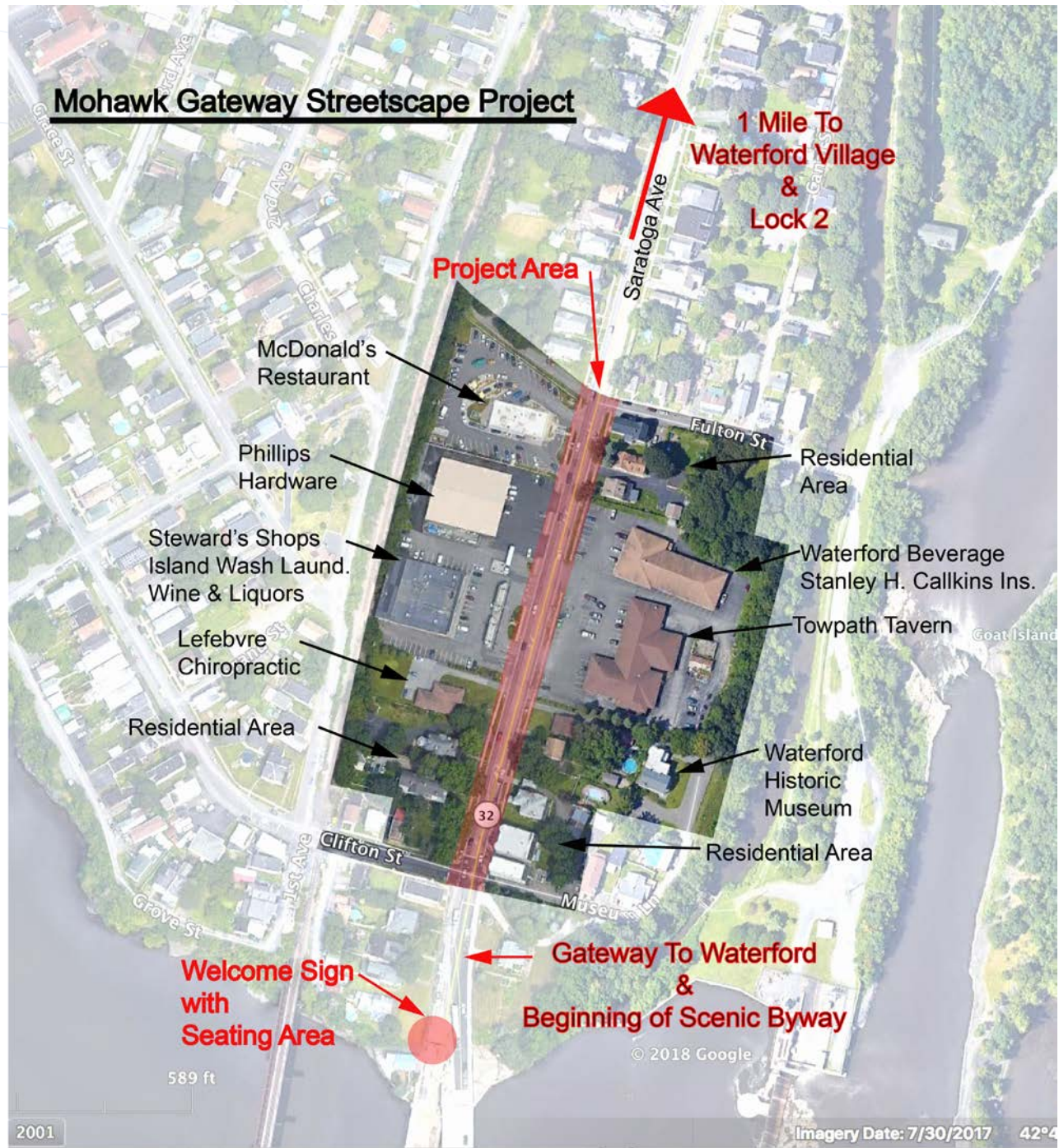
- **A Town and Village planning project, adopted in 2009**
- **Addresses strategies to balance economic development/waterfront uses and environmental protection**
- **A voluntary, grass roots effort coordinated between local and state governments, businesses, environmental interests, private organizations, and community citizens.**



## Local Waterfront Revitalization Plan

- **Assesses opportunities & constraints, and established desired future for waterfront.**
- **Provides strategy for achieving vision for waterfront, and identifies long-term uses and specific projects to implement.**
- **Mohawk Gateway Streetscape Project was one project proposed in LWRP.**

# Existing Conditions



## Project Goals

- Improve aesthetics of gateway area
- Promote goals and projects included in the Town/Village LWRP to revitalize waterfront areas
- Augment visitation to the Museum
- Increase private investment in the area
- Promote pride in the area and enhance quality of life



Town and  
Consultant Team  
Members

- **Town of Waterford**
- **Citizen Advisory Group**  
representing McDonald's,  
Stewart's, Dr. Lefebvre, Towpath  
Tavern, and Town, Waterford  
Historical Museum & Cultural  
Center
- **NYS Department of State**
- **Project Consultants**
  - Adirondack Mountain Engineering
  - Community Planning & Environmental Associates
  - Studio A Landscape Architects



NYS Grant and  
Project Time  
Lines

- **LWRP Implementation Grant** awarded for \$740,000 in 2016
- **Engineering, planning and design consultants retained**
- **Citizen Advisory Committee formed**
- **Project includes design, bidding, public input, and construction**
- **Project to be completed by September, 2019**





Major Tasks to be Accomplished

- Evaluation of existing streetscape conditions
- Design of streetscape improvements to
  - Facilitate park and museum access
  - Museum enhancement feasibility study
  - Improve aesthetics on street
  - Enhance gateway to Town and Northside Historic District
- Public Input
- Development of Construction Plans and Bid Documents
- Construction of Improvements



Specific Goals for  
Streetscape  
Project

The project will address improvements related to:

- Signs
- Sidewalks
- Landscaping, including trees and planters
- Lighting
- Street furniture, and other amenities
- Improve Museum access

First intersection /  
crosswalk at Gateway  
Inconsistent areas of  
pavement and grass

Only vehicular lighting  
No pedestrian scale  
lighting for sidewalks

▼ Sidewalk is at a close  
proximity to residence

Sidewalk is at it's  
mid-life and has the  
potential to last a few  
more years or could  
be replaced

Saratoga Ave. facing  
south towards bridge



# Existing Conditions

Area is cluttered with signage and poles  
Beginning of streetscape design/  
Business District

No inviting signage to direct visitors to Waterford Museum

Street is very narrow for two lane traffic

Saratoga Ave. facing south - car view of Museum Lane.



# Existing Conditions

Overgrown shrubs interfering with sidewalk

Only vehicular lighting. No pedestrian scale lighting for sidewalks

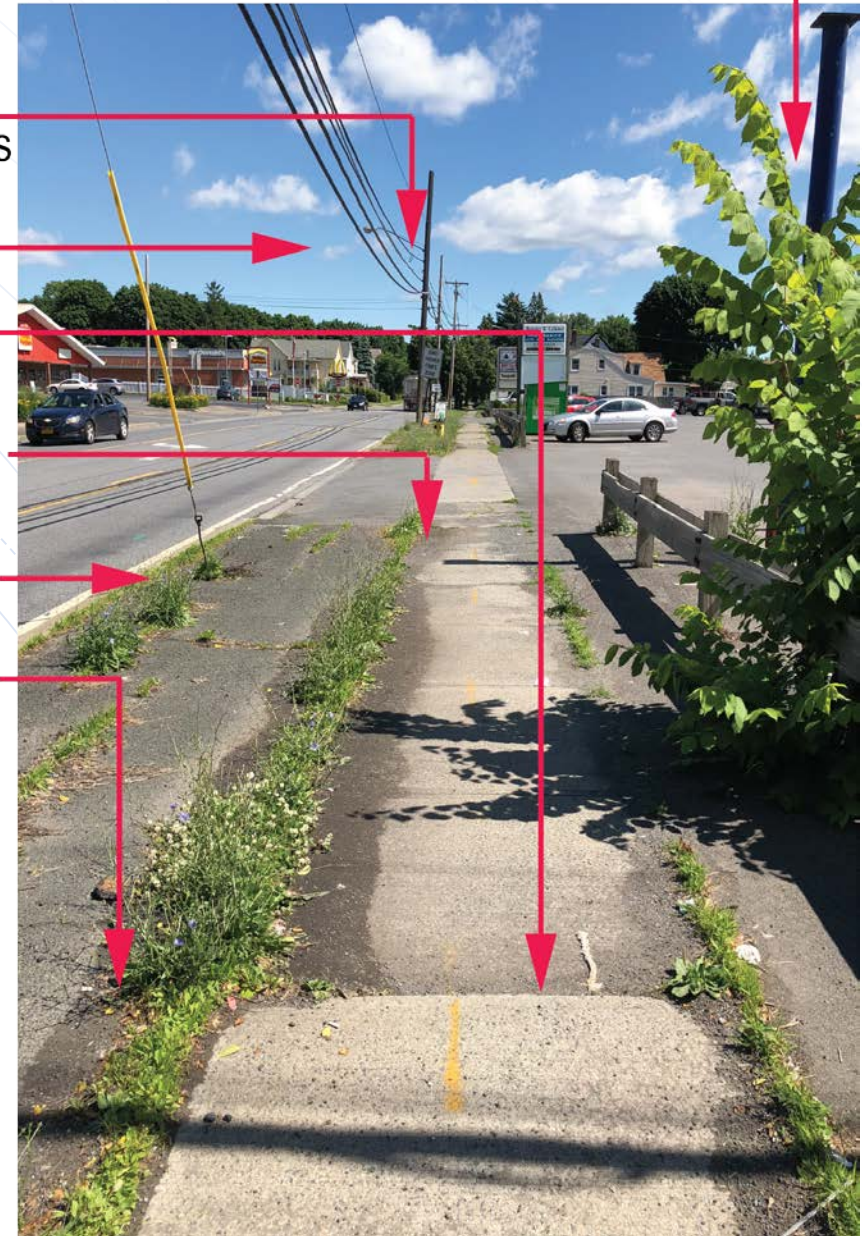
No street trees to calm traffic

Uneven sidewalk is a potential trip hazard

No stormwater management devices present

Some areas of curb are in disrepair

Inconsistent areas of pavement and grass.  
No buffer between sidewalk and street



Saratoga Ave. facing  
north next to plaza

# Existing Conditions

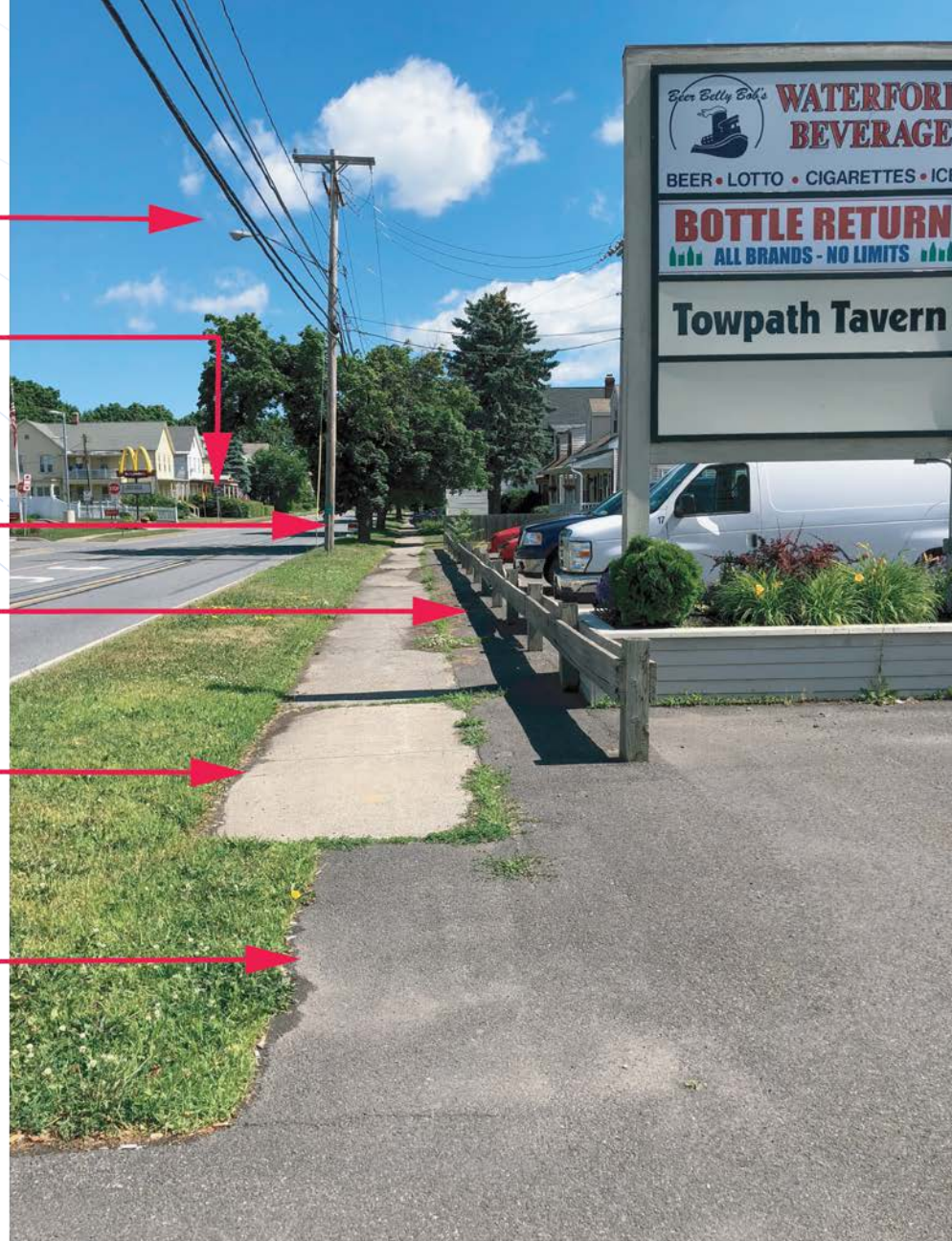
Only vehicular lighting.  
No pedestrian scale lighting  
Fast moving street traffic.  
Difficult for pedestrians to cross

Potential area bench  
seating  
Guardrail is the only buffer  
to sidewalk from parking

No stormwater  
management devices pres-

Sidewalk is inconsistent

Saratoga Ave. facing north  
next to plaza



# Existing Conditions

Three lane entry/exit with fast moving traffic. Difficult for pedestrians to cross  
There is a potential to reduce all plaza entries/exits to 2 lanes (24 feet)

No buffer between street and sidewalk

No sidewalk lighting

No traffic calming measures present or pedestrian crosswalk to encourage pedestrian use

Saratoga Ave. facing west accross from Stewards



# Existing Conditions

No traffic calming measures or crosswalks to encourage pedestrian safety

Only vehicular lighting. No pedestrian scale lighting for sidewalks

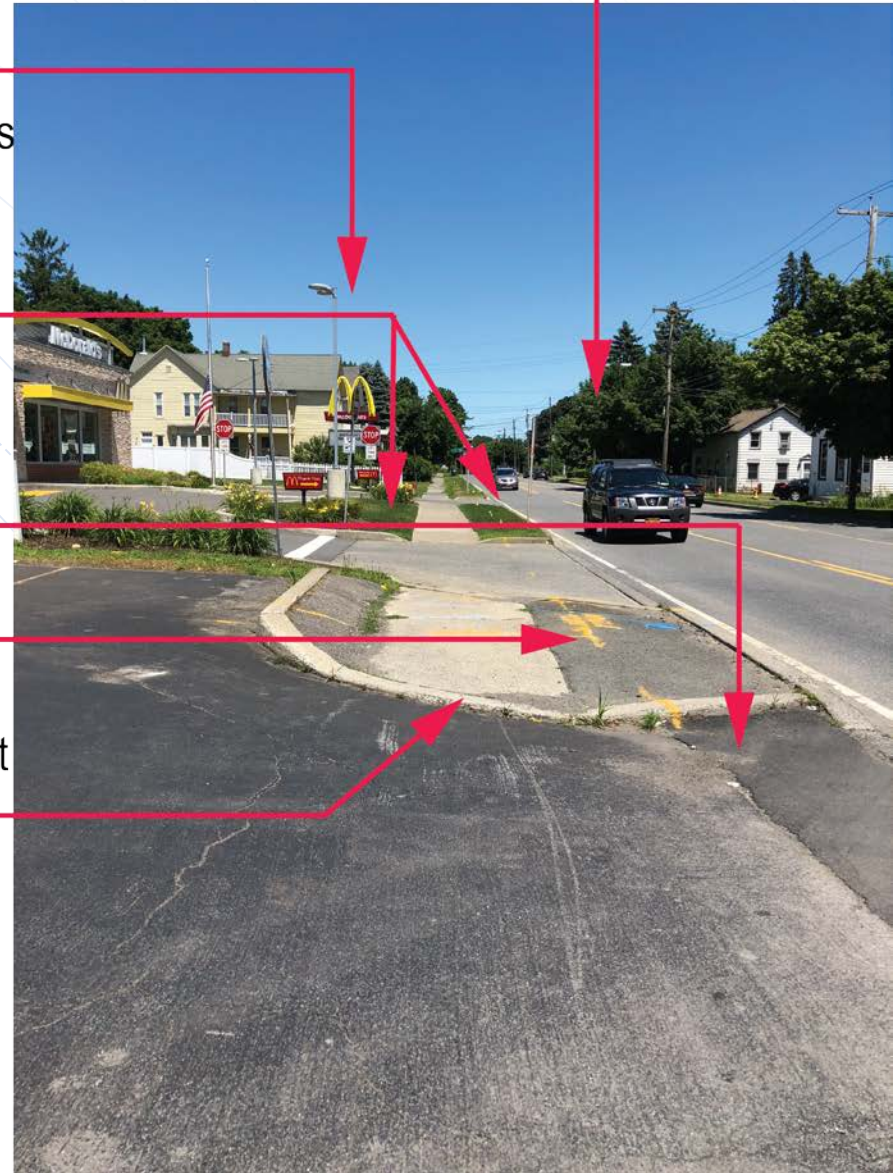
Potential area for bench seating and street tree buffer

Fast moving traffic entering parking area.

No buffer between sidewalk and street. No stormwater management device to capture run-off from asphalt

Potential trip hazard at uneven surface on sidewalk.

Saratoga Ave. facing north next to Phillips



# Existing Conditions



# Pedestrian Crosswalks



# Rain Gardens & Planting

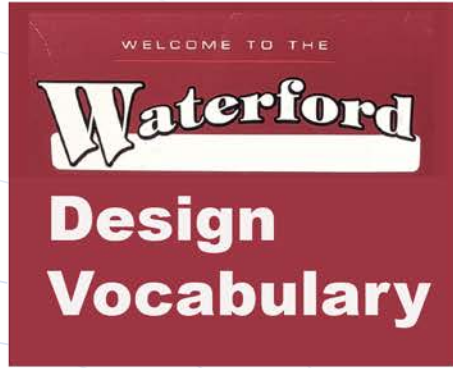


WELCOME TO THE  
**Waterford**  
Design  
Vocabulary



# Design Ideas

# Pedestrian Scale Dark Sky Lighting



# Benches/Amenities



# Design Ideas

New sidewalk, raingardens and planting strips north bound on Saratoga Ave. right side of street.

Also added:

- Pedestrian scale lighting
- Street trees



## Potential Streetscape Elements

New crosswalk  
across Saratoga Ave.

Also added:

- Pedestrian scale lighting
- Street trees
- Planting strips
- Rain gardens



# Potential Streetscape Elements

New crosswalk at  
plaza entry/exit  
and across  
Saratoga Ave

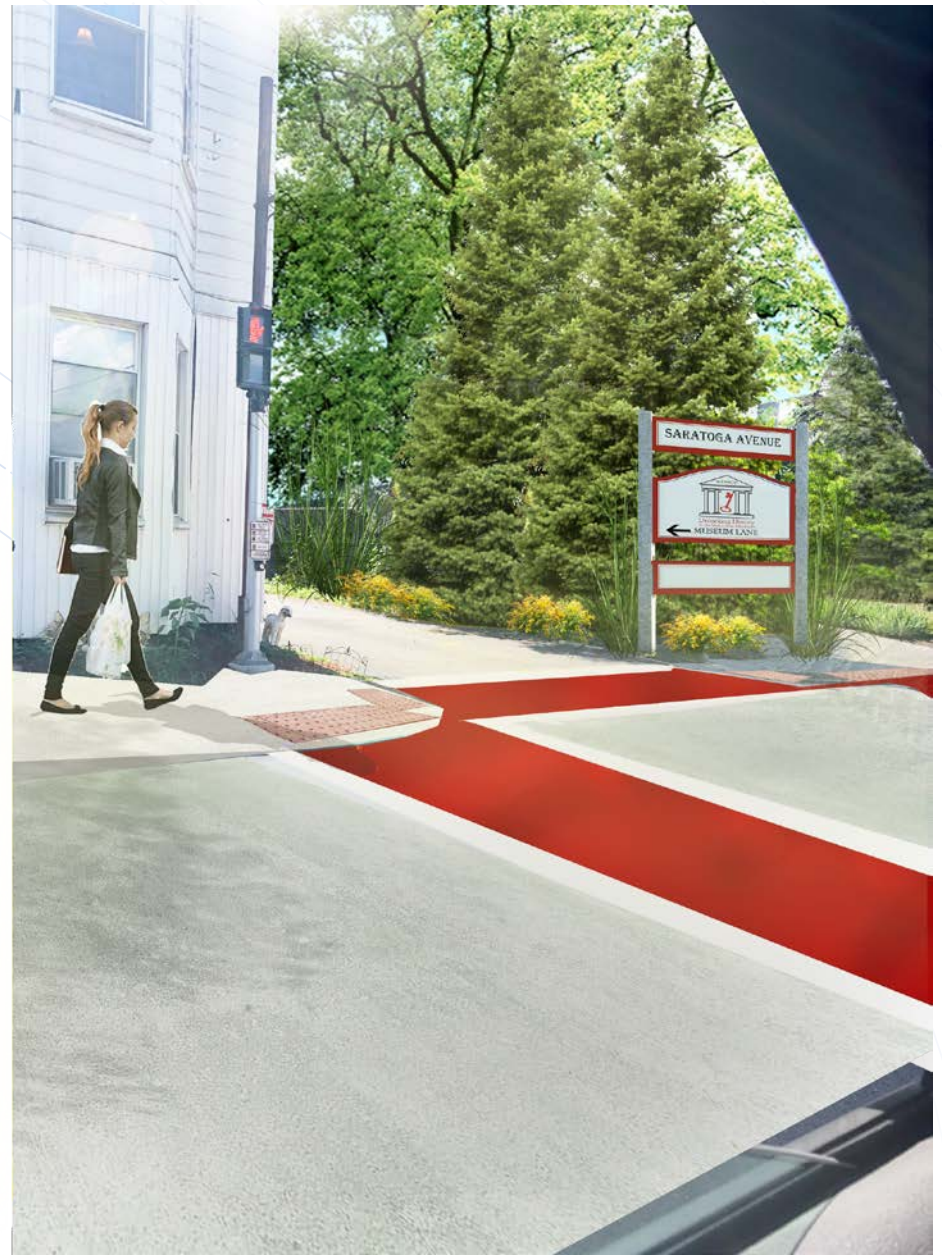
Also added:

- Pedestrian scale
- lighting
- Street trees
- Planting strips
- Rain gardens



Potential Streetscape Elements

New entry sign for  
Waterford Museum



Potential Streetscape Elements



Comments and  
Feedback on  
Streetscape  
Elements Desired

- **Wish list?**
- **Features you want to be improved?**
- **Feedback on options/design of streetscape elements?**
- **Questions/Answers on project/process/time line**

## Next Steps

- **Work with Town and Advisory Committee on concept plans/drawings/specifications**
- **General Public Meeting for feedback**
- **Finalize plans, drawings and specifications**
- **Develop construction bid documents**
- **Award construction bids**
- **Construction**



Want to see a  
Birds-Eye View of  
Waterford, the  
Falls, and the  
Rivers?

- **Watch this You Tube  
Video!**

**<https://youtu.be/km7U2qT9tGU>**